

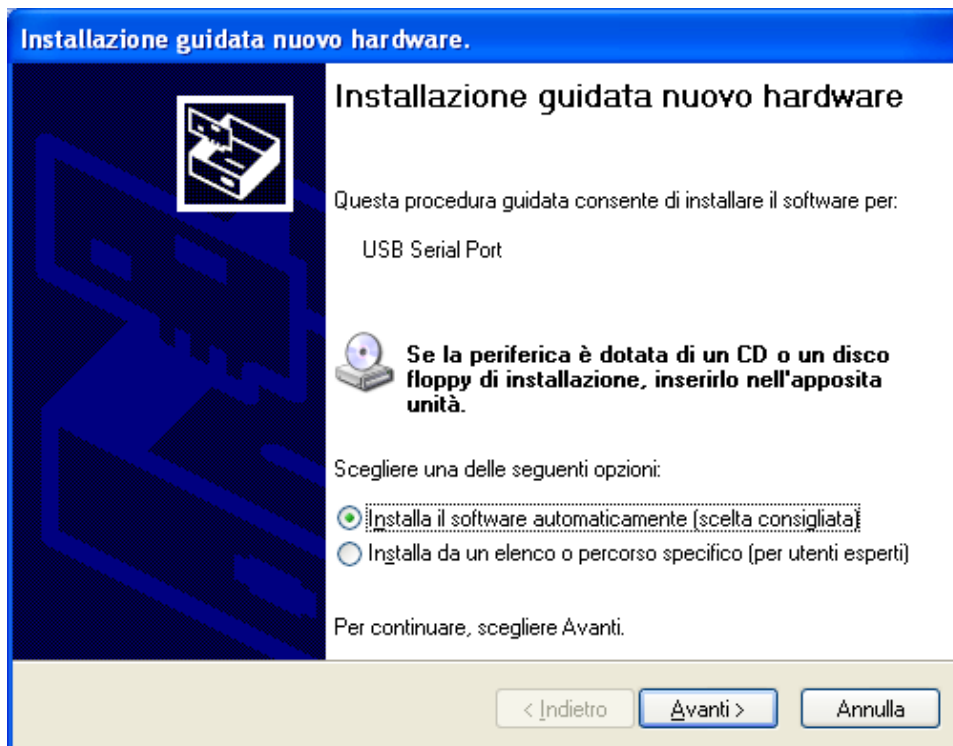
GUIDE TO UPGRADE ON-LINE LS8

Switch on LS8 and connect to PC via USB cable as in the picture below

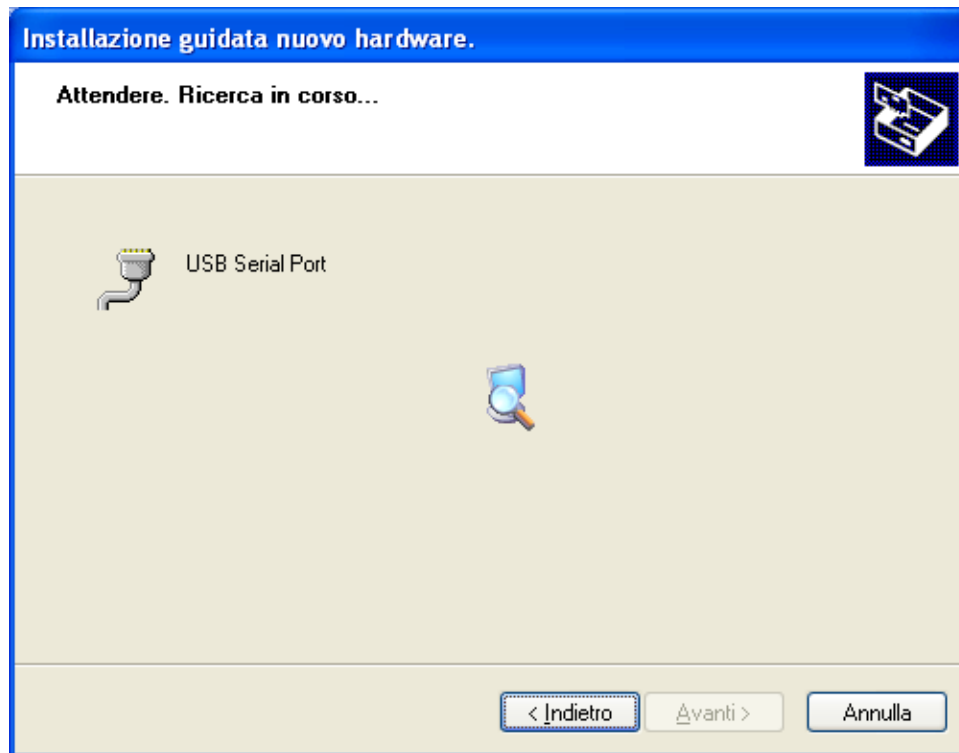


If it is the first time that you connect the machine to the PC you need to install drivers. Computer will recognize automatically a new device and it will open "Installazione guidata nuovo hardware"

To proceed with the guided installation follow the next steps



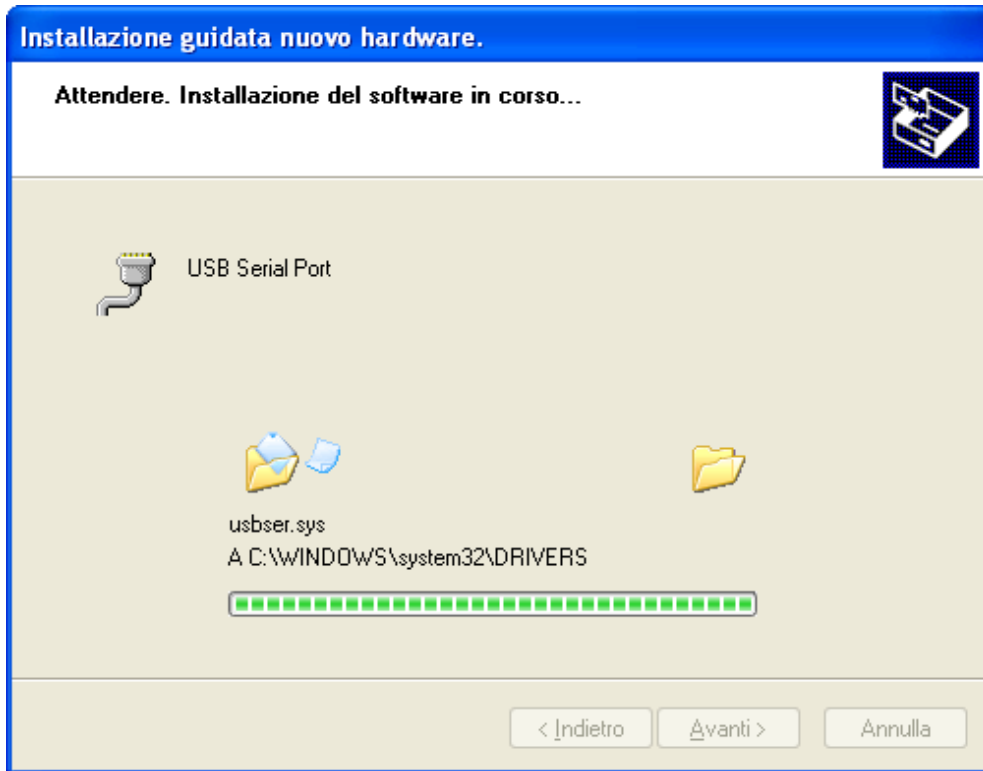
Choose "Installa automaticamente" and then "Avanti".



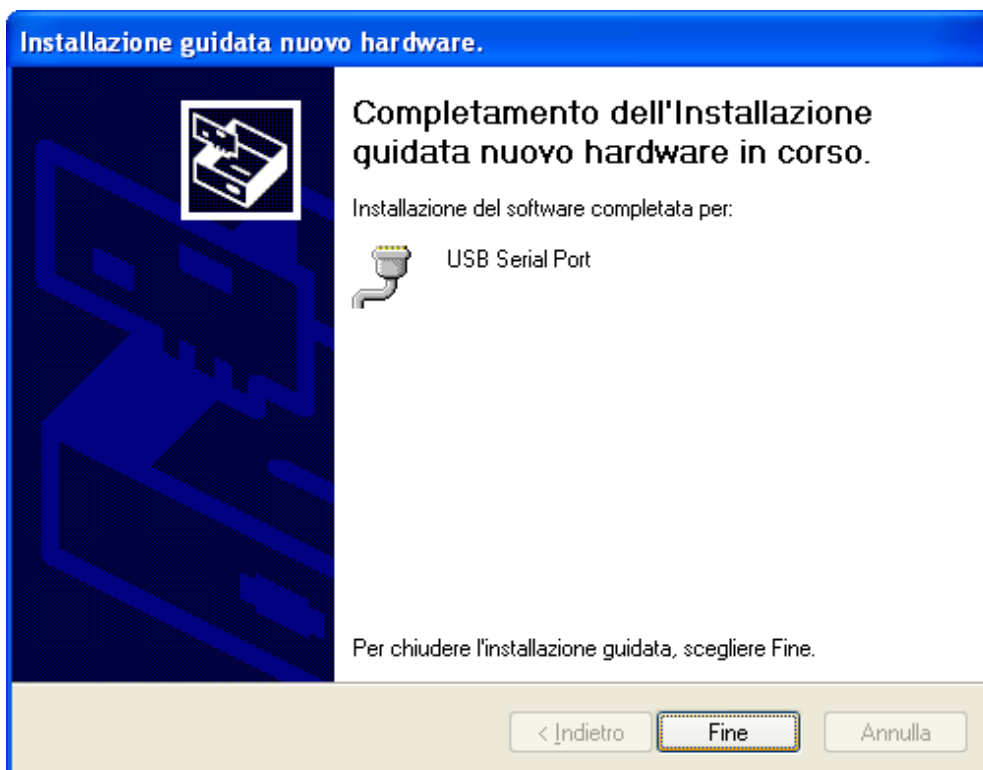
PC will search automatically the drivers



Click "Continua".



Automatic installation will continue

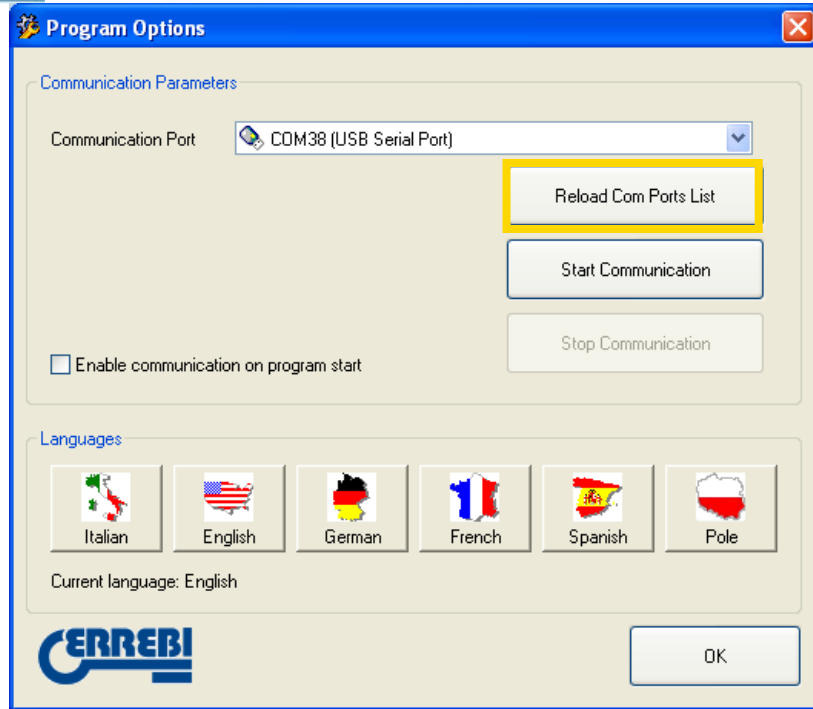


Drivers installation completed, click "Fine". The new device is now ready.

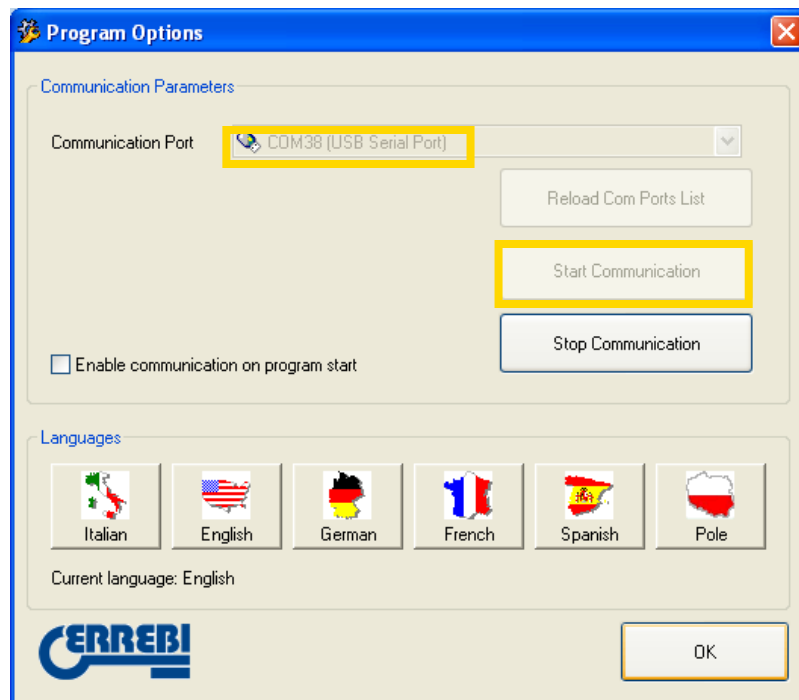
Once the drivers installation is done launch the LS8 software by clicking the following icon on the desktop



Procede by clicking "Settings".



Click on “Reload Com Ports List”.

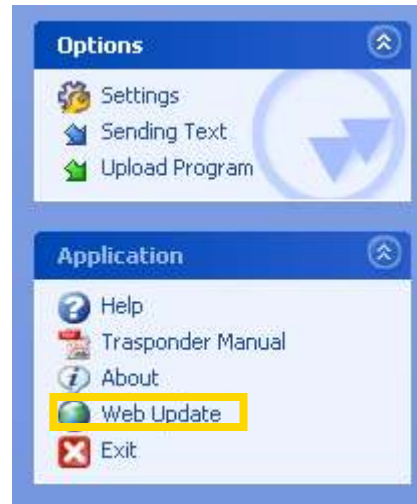


Select the COM with USB symbol (number will change from different computers).
Click “Start Communication”

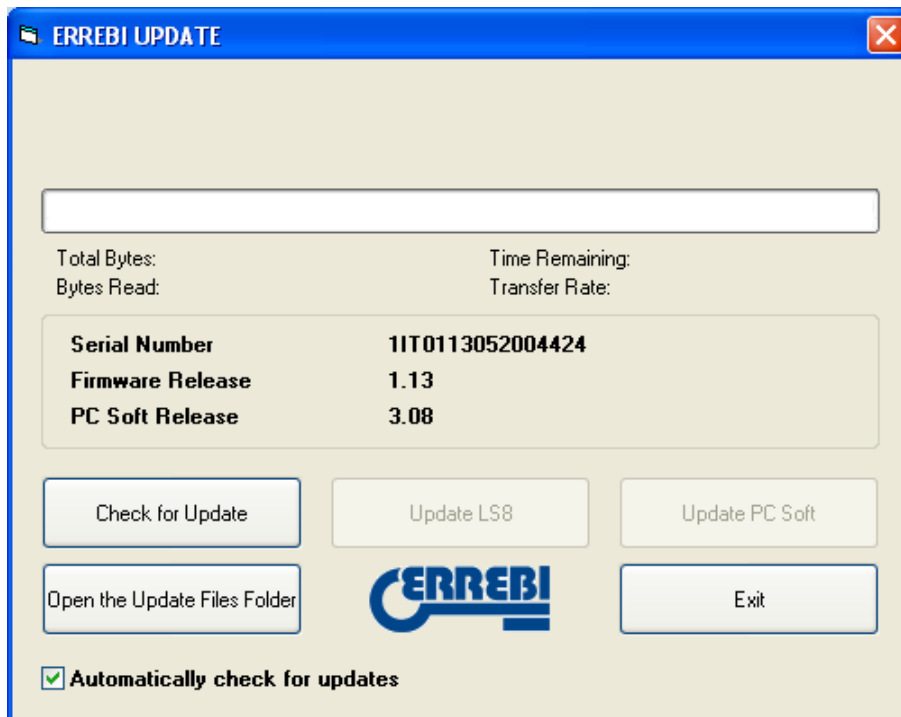
If the device is connected to the PC the left bottom “COM” led should be green



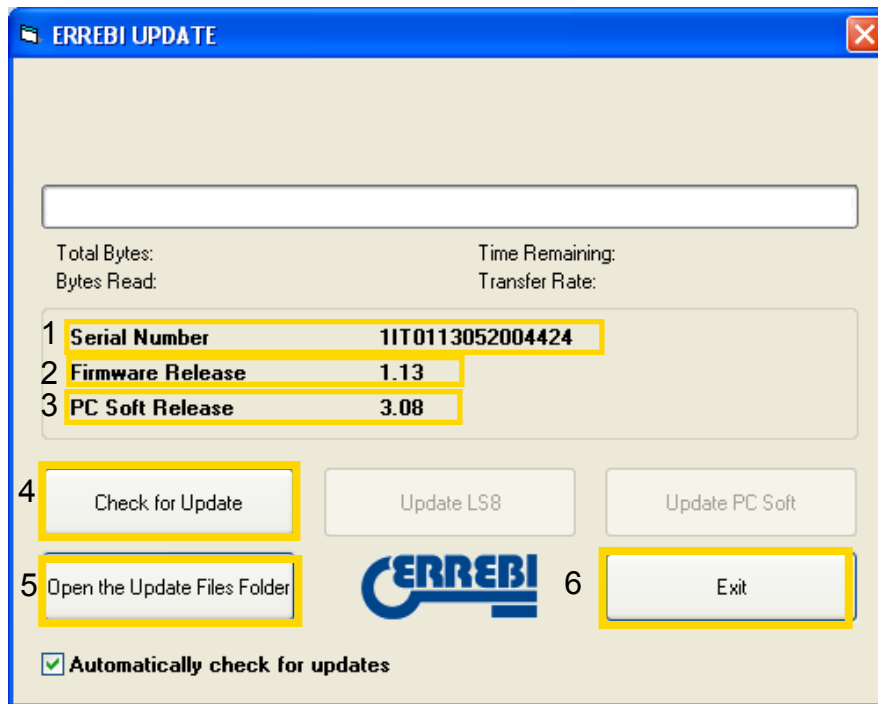
Now the LS8 is connected to the PC and we can proceed with update
In menù Application choose "Web Update"



the following screen will appear



Different functions descriptions:

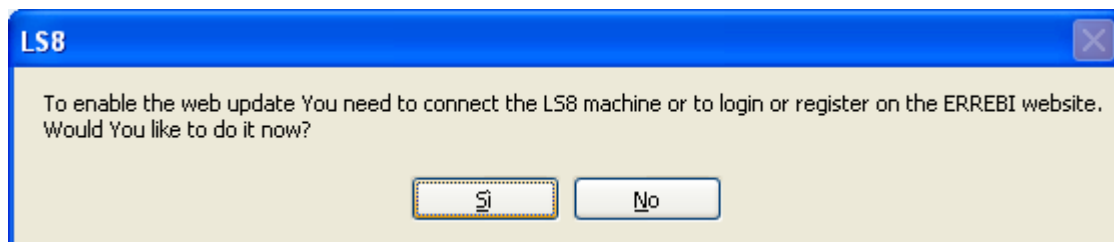


1. Device serial number
2. Device firmware
3. PC software version
4. “Check for Update”
5. “Open the Update files Folder”
6. “Exit”

CHECKING UPDATES

Choosing this option it's possible to check for eventual updates available but it is necessary to be registered to ERREBI

When you choose this option the following screen will appear



Choose “Si” to proceed with registration

LOGIN

REGISTRATION FORM

Please, fill in the form with all the required informations to register You on the ERREBI update website.

COMPANY *	ERREBI	
CONTACT *	ANTONIO	
ADDRESS *	VIA PIANEZZE 42-49	
CITY *	CIBIANA DI CADORE	
POSTAL CODE *	32040	
COUNTRY *	Italy	
PHONE *	0435542500	
FAX		
EMAIL *	aesposito@errebispa.com	(it will be Your username)
CONFIRM EMAIL *	aesposito@errebispa.com	
WEBSITE	www.errebispa.com	
PASSWORD *	password	(min 8 - max 20)
PASSWORD CONFIRM *	password	(min 8 - max 20)
NEWSLETTER	<input checked="" type="checkbox"/>	
PRIVACY *	<p>insurance company, business information, companies, professional and consultants transport companies state insurance boards.</p> <p>In relation to the same purposes, data may be processed by the following classes of executors or processors: General Management, Administration, Financial Department, Sales Department, Expedition Department.</p> <p>The data subjects may exercise all the rights set forth in art.7 of L.n.196/2003 (including the rights of data access, updating, objects to data processing and cancellation)</p> <p>We process personal data that was collected during visits to our website In adherence to italian law D.L.30 Giugno 2003 n°196 concerning personal data protection for people or companies. The subject declares the knowledge of Informativa sulla Privacy and confirm his agreement to use his personal data.</p> <p><input checked="" type="radio"/> I AGREE <input type="radio"/> DISAGREE</p>	
SERIAL NUMBER *	1IT0113052004424	
PC SOFT RELEASE *	3	.08 eg. 2.00
FIRMWARE RELEASE *	1	.10 eg. 1.23
<input type="button" value="SUBMIT"/>		

You must fill all boxes with * and choose "I agree" in the part of Privacy regulations

Once the form has been filled completely click "Submit" to send the registration request

Will now appears a screen that confirms that a new account has been created and that indicates the 2 ways to update the device



YOUR KEY



YOUR KEY



LOGIN

REGISTRATION SUCCESSFULLY

Your account has been added to the ERREBI database. You will receive an email soon with the registration confirm.

A) ONLINE UPDATE: To proceed with the automatic online update, select Web Update from LS8 PC software.

B) OFFLINE UPDATE: You can also manually update the LS8 in offline mode, downloading both, PC software and EVO firmware from each customer website, which is accessed with your personal login and password.

Once the registration has been made, you will receive an email with your username and password:

Great, You have registered Your LS.

Your user name and password to access to the ERREBI website are:

Username: aesposito@errebispa.com

Password: password

Click [here](#) to enter the customer website.

Thanks for Your attention

Best regards

ERREBI Support Team

Now you have to return to LS8 PC software

ERREBI S.P.A.

Via Pianezze, 42-49

32040 CIBIANA DI CADORE (BL) - ITALY

Telefono: +39 0435 542500 Fax: +39 0435 542522

Società soggetta all'altrui attività di direzione e coordinamento

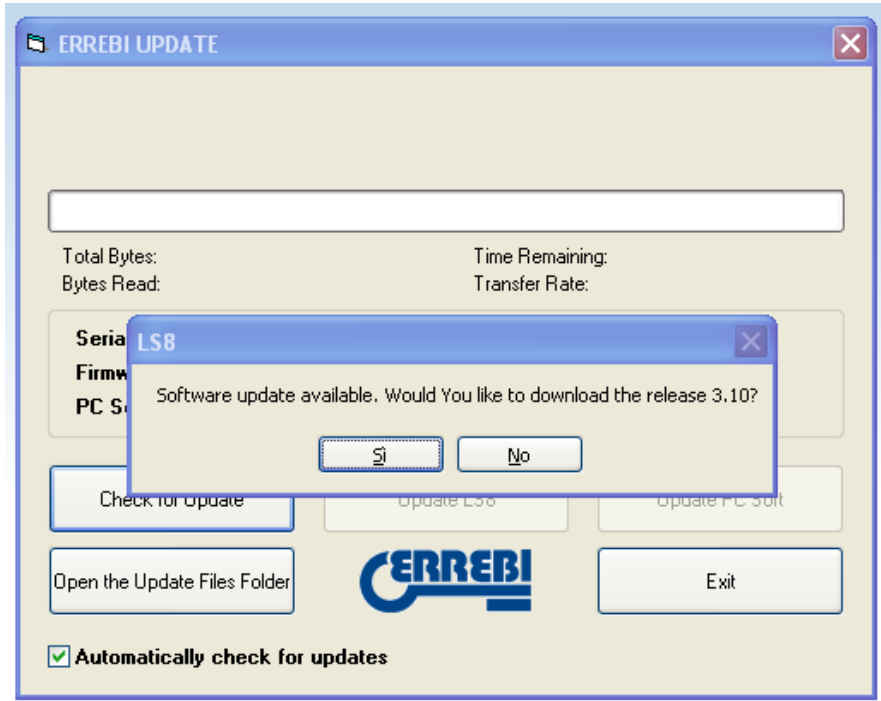
info@errebispa.com - www.errebispa.com

R.E.A. BL n. 18882 - Cap. Soc. € 1,150,000 i.v.

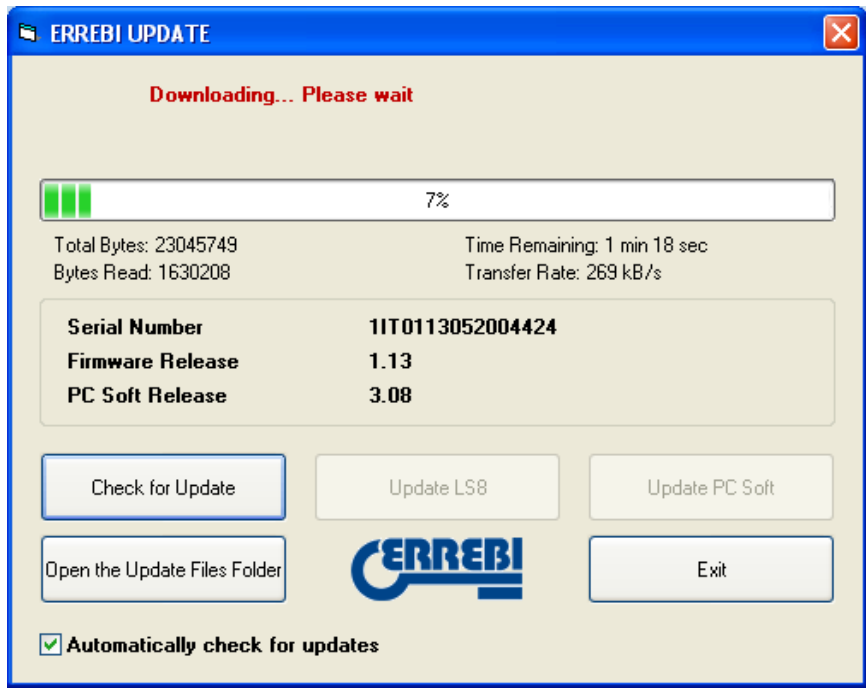
P. IVA - VAT / Cod. Fisc. / Reg. Imp. 00056710254

Choose again “Check for update” the software will automatically find eventual available updates both for Firmware than for LS8 PC software.

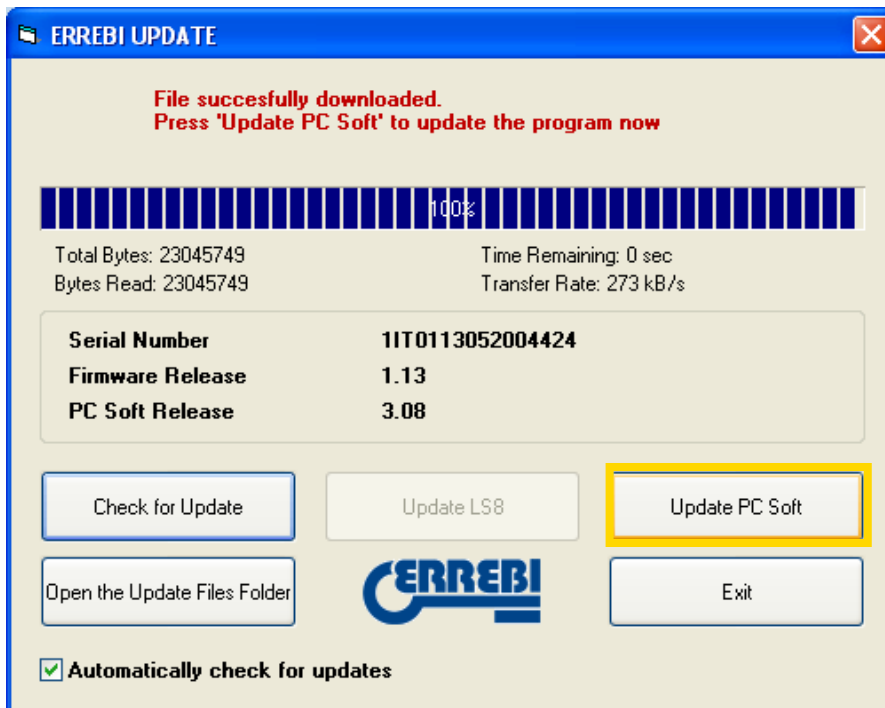
Example PC SOFTWARE UPDATE:



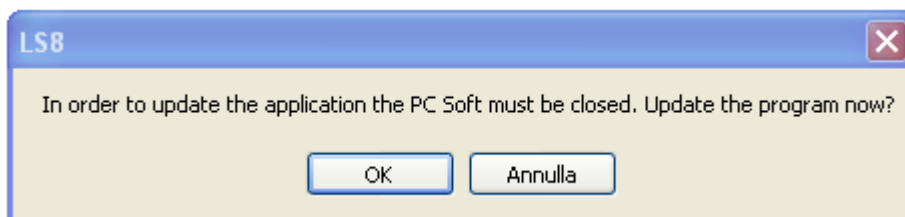
in the example a PC SOFTWARE update is available
Choose “Si” to proceed with the download.



Once files download ends the following screen will appears

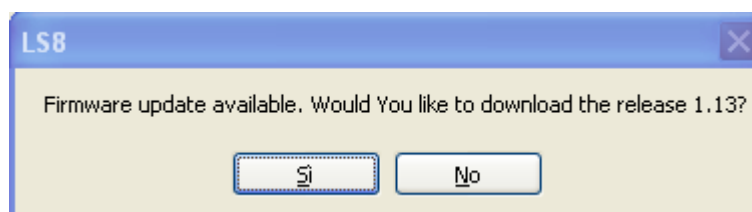


Click “Update Pc Soft” to update the software.



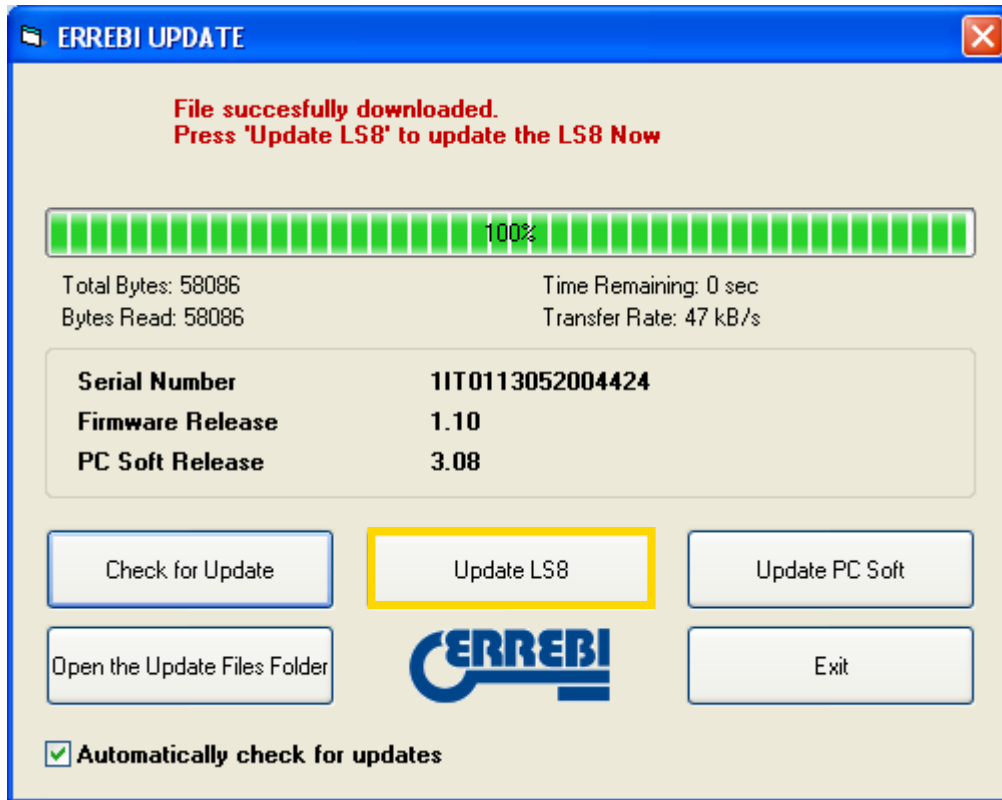
Click “Ok”, the app will be close and the update will be automatically done.

Example LS8 FIRMWARE UPDATE:

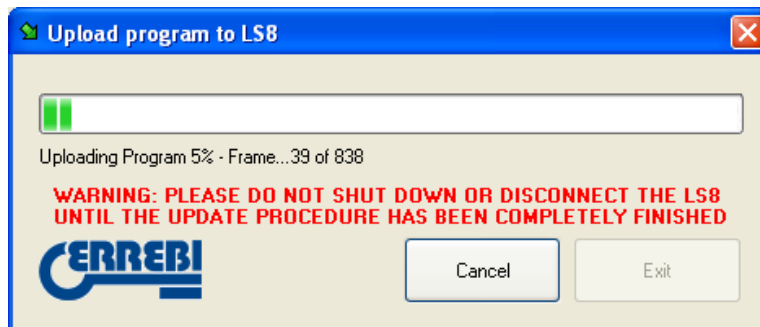


in the example an LS8 Firmware update is available
Click “Si” to proceed with the download.

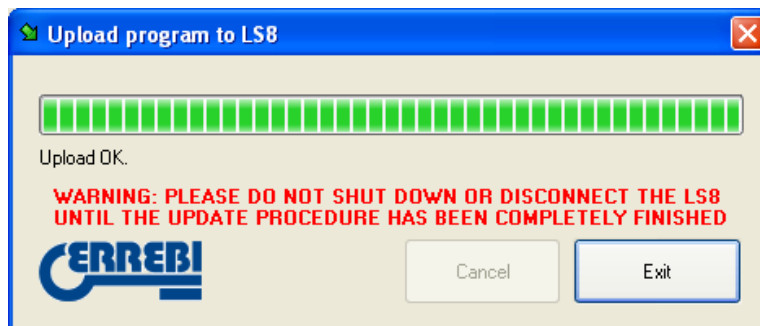
Once files download ends the following screen will appears



Click “Update LS8” to update the firmware.

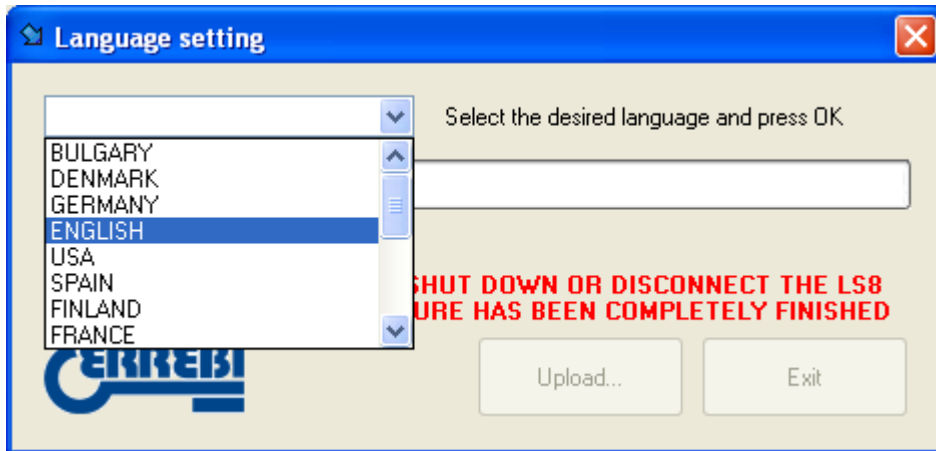


As indicated in the screen don't switch off or disconnect LS8 until the end of the download

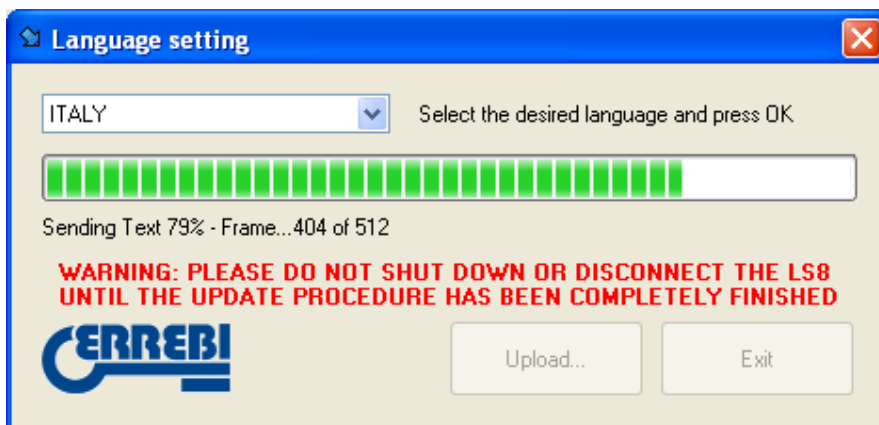


LS8 is now updated, click “Exit”

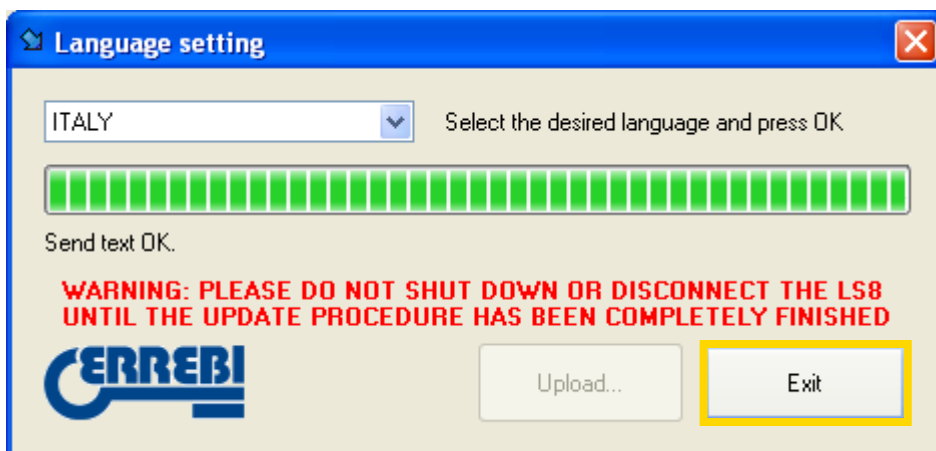
Once the LS8 firmware updated has been done and clicked “Uscita” the program will automatically searches for the language to install in the LS8, as following screen:



Choose your language and click “Upload”



Once the operation has been done “Send text OK” will appears on the screen.



Click “Exit” and disconnect LS8 from menù Impostazioni/Arresta comunicazione.