

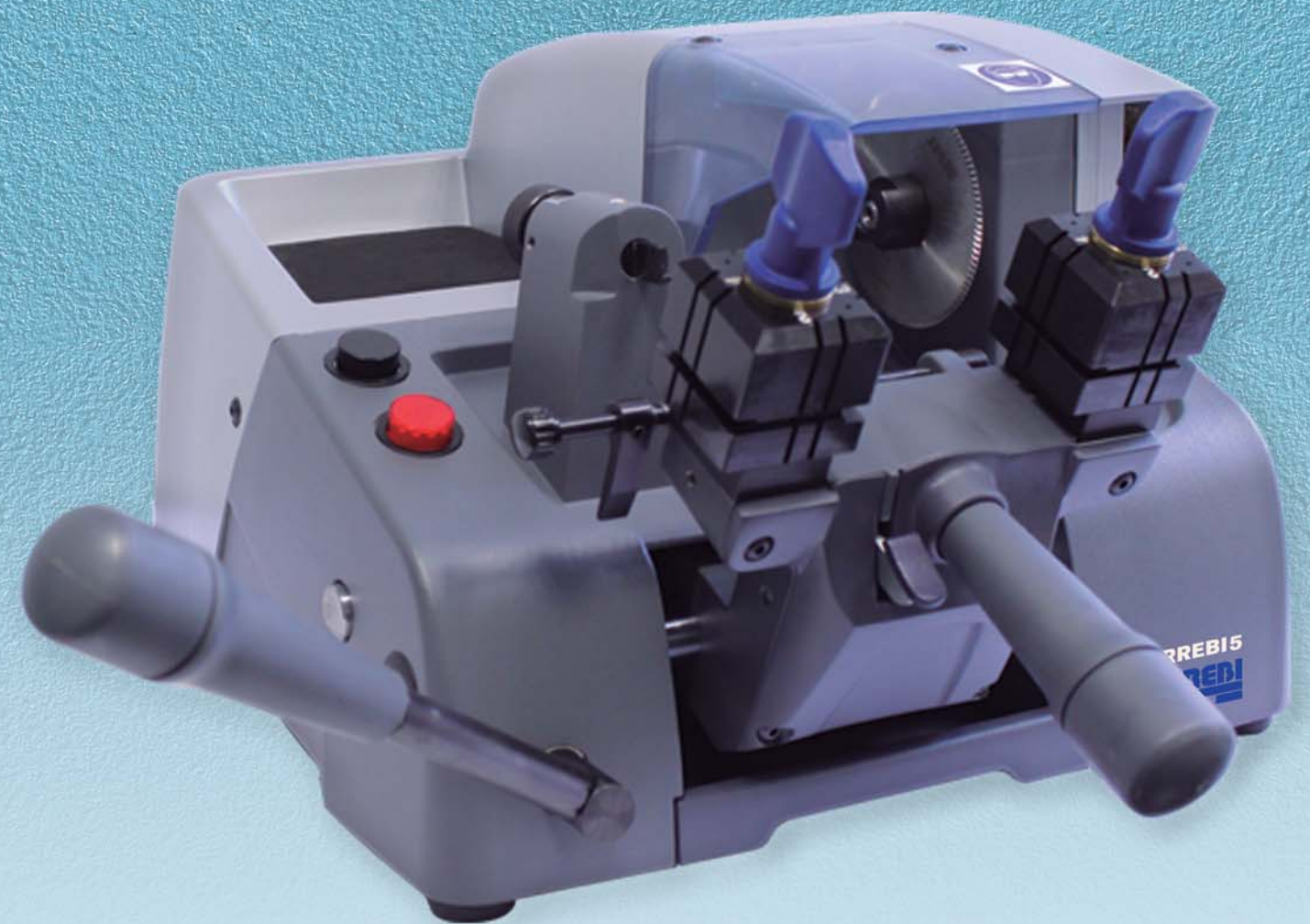
ERREBI 5

Errebi S.p.A.

Via Pianezze, 42-49
32040 Cibiana di Cadore
Belluno - Italy
Tel. +39 0435 542.500
Fax +39 0435.542.522
info@errebispa.com
www.errebispa.com

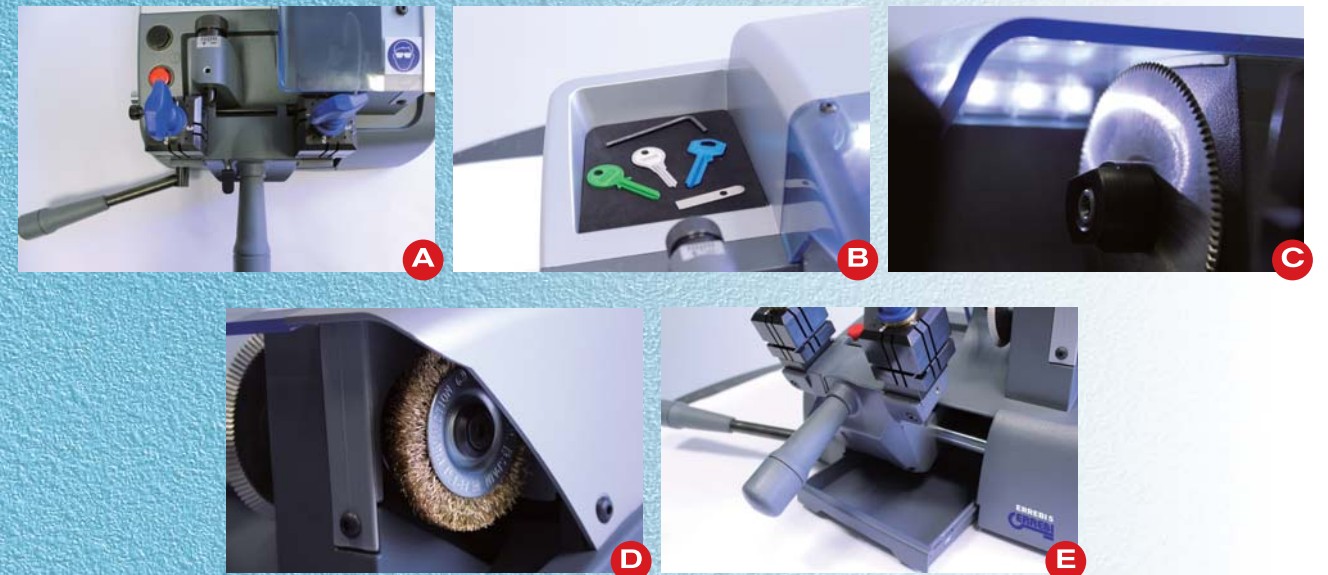
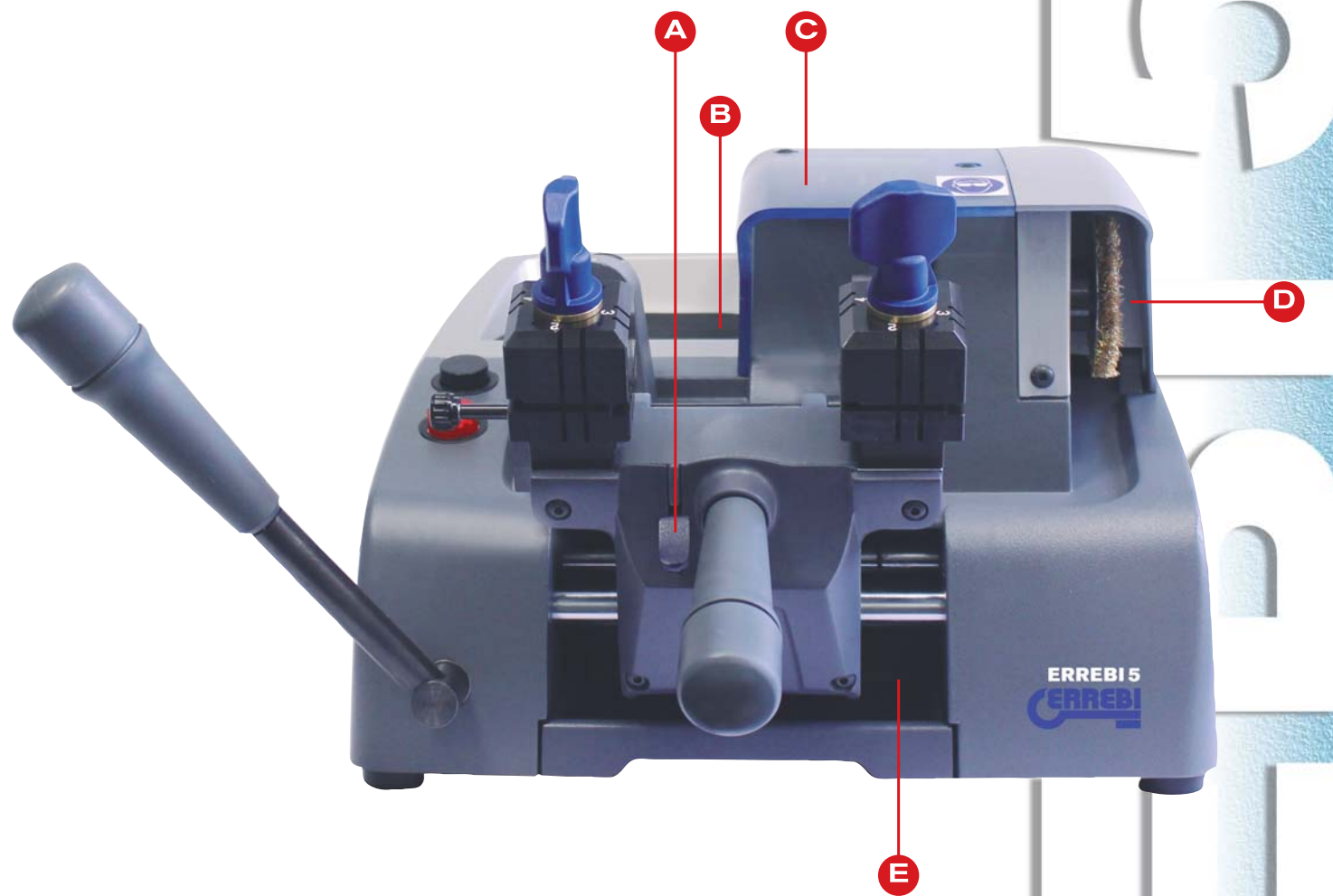
Errebi Deutschland GmbH

Neustraße, 161
42553 Velbert - Germany
Tel. 02053 49 62-0
Fax 02053 49 62-22
info@errebi-gmbh.de



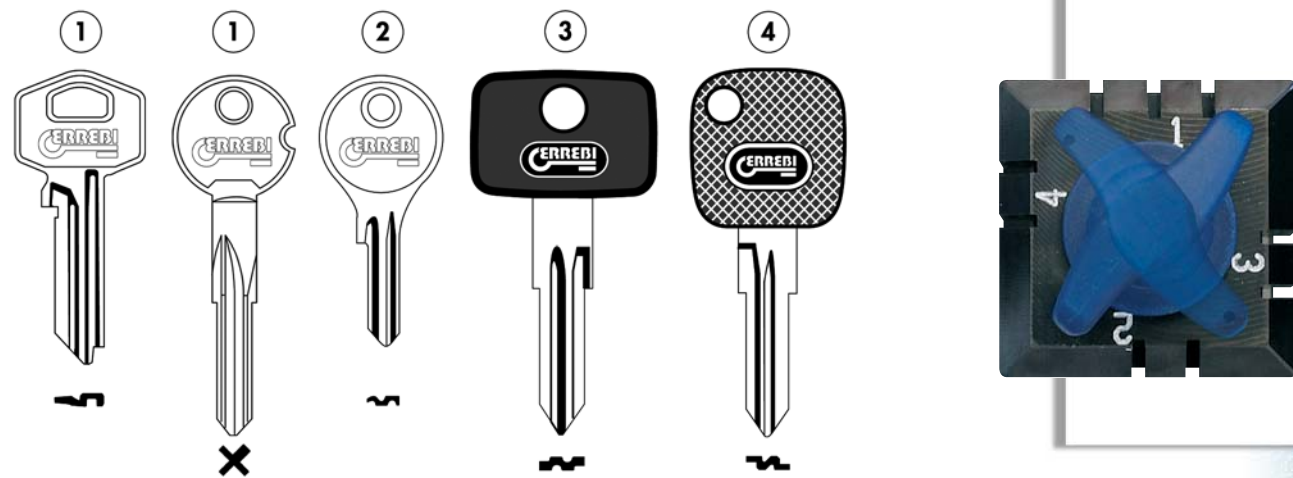
ERREBI 5

ERREBI



CARATTERISTICHE • DETAILS

- A** Pulsante per lo sblocco del carrello.
Carriage release button. Entriegelung der Spannbacken. Bouton pour libérer le charriot.
- B** Vaschetta portachiavi e accessori.
Compartment for keys, accessories. Ablage. Compartiment pour clés, accessoires.
- C** Illuminazione a led.
Led lighting. Led Beleuchtung. Eclairage par led.
- D** Spazzola pulizia chiave.
Brush. Bürste. Brosse.
- E** Cassetto raccolta trucioli.
Tray for swarf collection. Auffangschale für Fräss-Späne. Tiroir pour recueillir les copeaux.



optionals

ADATTATORI	ADAPTERS	ADAPTEURS	ADAPTER	ADAPTADORES
MO01A503 FIAM (FY80)	MO01A505 CITROEN (SM7-8)	MO01A502 RENAULT (NE 66)		

**DATI TECNICI • DATOS TECNICOS • TECHNICAL DATA
SPECIFICATIONS TECHNIQUES • TECHNISCHE DATEN**

FRESA • FRESA • CUTTER • FRAISE • FRÄSER	HSS Ø 80x5x16
MOTORE • MOTOR • MOTOR • MOTEUR • MOTOR	Monofasico • Monofasico • Single phase Monophase • Einphasig 220 v - 50 hz • 0,18 kw - 1,350 rpm
MORSETTI • MORDAZAS • JAWS • MACHOIRES SPANNBACKEN	Morsetto a 4 lati • Mordaza a 4 lados • Jaws on 4 sides Mâchoires à 4 côtés • Spannbacken von 4 Seiten
LARGHEZZA • ANCHO • WIDTH • LARGEUR • BREITE	430 mm
ALTEZZA • ALTO • HEIGHT • HAUTEUR • HOHE	280 mm
PROFONDITÀ • PROFUNDIDAD • DEPTH PROFONDEUR • TIEFE	420 mm
PESO • PESO • WEIGHT • POIDS • GEWICHT	17 kg.